

Sirtawn Systems

Features and Functions: Inventory Control

Overview

* The module is based on a centralized database that contains all the required data for the Inventory (Item) Control Module and all of the interfaced modules. Other key databases include a “Kit” database for defining kits, Multiple Location Item Database for control information such as “quantity on hand” pertinent to a specific location (other than the main location) and Vendor / Manufacturer Price Book Database that retains every possible part from the Vendor/Manufacturer. (A simple process allows the set up of an inventory item from the price book when required).

Key Fields

- * 15 character + “Size” define a unique item# (part#). Note: The “Size” field usage is optional.
- * 3 – 45 character description fields, the UPC field and the main vendor Item#. An additional database provides cross-reference to your other vendors and prices.
- * Costing fields track Standard, Average and Last Costs plus a “Pricing Cost” field for markups. Includes a cost matrix to build up “Landed Costs” from “Off shore” costs (Exchange, duty, etc.).

Item#/Size	Price Group	Cust Type	Pricing Type	Level A	Level B	Level C
001000	0.00	ZZZ	D Discount	7.7700	99999999.0000	0.0000
001029	0.00	ZZZ	P Pricing	1.5500	2000.0000	1.4000
001105	0.00	ZZZ	P Pricing	143.0000	5.0000	125.0000
KIT1	1.00	ZZZ	D Discount	20.0000	9999999.0000	0.0000
	0.00	PT	D Discount	90.0000	9999999.0000	0.0000

Cust#: BRW001: BROWN, BARRY R
Item#: 001000: OUTBOARD MTR LOCK - SAMPLE DATA
DESC2 -SSSS-----TEST
PriceType: D: Discount
PriceGrp: ZZZ
CustType: ZZZ ALL TYPES
Seq: Cust#,Item#
50PCx2

Price Matrix

Quantity	Pricing	Level D:	0.0000	0.0000
Level A:	7.7700	Level E:	0.0000	0.0000
Level B:	9999999.0000	Level F:	0.0000	0.0000
Level C:	0.0000	Level G:	0.0000	0.0000

Function Keys
Enter: Change Line (Level A,B,C) SF2: Delete
F5: Reposition
F9: Add New Line
SF9: Change Full Record
SF4: Print Customer's Prices
SF6: Print Cust.'s Prices (1 Line)

Note: The last Level must contain the Highest Quantity.

* Pricing fields include “Suggested” and Regular Price and a Complex Price Matrix to calculate special prices such as wholesale, special Customer, “Buying Groups” and high quantities. Supports an unlimited currency types (date based, buy, sell and corporate rates).

- * Unit of Measure may differ from purchasing, inventory count and Selling (Drum of oil = liters).
- * Multiple “Re-ordering” methods (Min. Levels/Re-order quantity, lead time, safety stock, etc.).

Other Features

- * "Available stock" popup (Includes multiple Locations, “On Order” quantities).
- * Find Inventory quickly using Bar Codes and Scanner, “Lookup Groups/Subgroups”, Lookup by Description, Lookup by Vendor or Lookup by Customer’s Purchased History.
- * Supports full “Kit” processing including “Kits-on-the-fly” and manufactured kits / Packaging “Kit” Control of “Substitutions”, “Package” pricing and Item quantities.
- * Serial number selected Inventory Items (“Full Tracking” from Receiving to Sale or “Partial Tracking” – records when item is sold).
- * Cycle Count Sub-System includes “Count sheet” method and “Tag# Count” method. Control the count by “Count Cycle#”, Product Group range, Bin# range and/or Vendor#.
- * Inventory Adjustment Function (with full tracking and GL interface).
- * Bar Code generator (Built-in) allows user defined Bar Code Labels (for Inventory, POS, etc.).

Reporting

- * Most reports are available by Item# or Product Group ranges with additional filters (such as Vendor#, Bin# and Stocked Flag).
- * Over 40 Reports include Availability, Re-order, Evaluation, Overstocked, Maximum Value, Pricing, Adjustment, Kit, Rental, Cost Variance reports plus many more.

Interface to Other Modules

- * Integrated to Purchasing and Receiving Module, Order Entry Module, Service Module, Manufacturing Module and Major Unit Inventory Module.
- * Integrates to the "Notes" subsystem allows for printing of standard note information on all documents including picking slips, sales orders, purchase orders and invoices. Notes may be attached to customers, products and vendors as well as system notes.

Features and Functions: Inventory Control

Inventory Quick Setup

The screenshot shows the 'Inventory Master Database Quick Input' window (Page 1 of 3). It contains the following fields and values:

- Company: BANK
- Item#: 001044
- Size/Code: 0.00
- Desc: BLACK COMPASS
- Bin#: STORE7
- Sort Desc: BLACK COMP
- Desc2: FLUSH MOUNT "DIAL" TYPE
- Desc3: BLACK TRIM, WHITE DIAL
- UPC: COMPASS
- Misc. Code: (empty)
- Label: N (Y/N)
- Vendor#: OMC (ONTARIO MARINE CORP)
- Vend's Item#: 001044
- Vend Disc: 0.0000
- Created: 04/13/0279
- Units/Label: 0.00
- Invy.UOM: EACH
- Purch.UOM: EACH
- Purch.Ratio: 1.0000
- Stocked: Y (Y/N)
- Sell.UOM: EACH
- Sell.Ratio: 1.0000
- Lookup Grp: PT
- L/Up SubGrp: ACCESS
- Product Grp: 40
- Print Grp: AT
- PriceGrp: B
- List Price: 53.8000
- Reg Price: 53.8000
- Price Date: 12/31/1899
- Std.Cost: 53.8000
- Avg.Cost: 35.8700
- RegCost(WH): 53.8000
- Cost Date: 04/13/0279
- Zero Cost: (empty)

Unique "Key" identification to Item.

Function Keys: Preprogrammed "Hot Keys" and/or "Mouse Buttons provide easy access to related functions are used throughout the system.

Separate Unit of Measure control for Selling and Purchasing the Item. (For Example: Buy Rope by the Spool (1000m) and Sell by the Foot.

Costing and Pricing Options.

The screenshot shows the 'Inventory Master DB Quick Input' window (Page 2 of 3). It contains the following fields and values:

- Defaults:
 - Status: A (Active)
 - GL Revenue*: 4010-600
 - GL Cost*: 5170
 - GL Inventory*: 1030-600
 - Backorder: Y (Y/N)
 - Rental: N (Y/N)
 - Serial: Y (F/Y/N)
 - Sample: N (Y/N)
 - Controlled: Y (Y/N/P:Phantom)
 - Piece Tickets: N (Y/N)
 - Multiple Subs: N (Y/N)
 - Item type: P (P]urch/[M]anu.
- Use for Override Only!:
 - Tax1*: N Code1: (empty)
 - Tax2*: N Code2: (empty)
 - Tax3*: N Code3: (empty)
- Kit Control Flags:
 - Kit: N (Y/N)
 - Explode Kit: N (Y/N)
 - Explode Cost: N (Y/N)
 - Explode Price: N (Y/N)
 - Explode Rev: N (Y/N)
 - Explode Inv: N (Y/N)
 - Sales Update: C (K/C/B)
- Rental Setup:
 - Maximum#: 0 (People in Rental Unit)
 - Rent Type: (empty) (M:Mainltn A:Accessory/S:Slip)
 - Rent Rate*: (empty) (XXX/Slip)
 - Rent Deposit: 0.00
 - Rental Note: (empty)
 - Qty Avail to Rental: 0
 - Qty on Reserved: 0

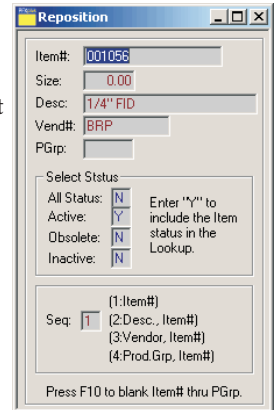
Override "Regular" GL Distribution for special items (AR Control: Normal GL).

Kit Control for the Kit Master Item.

Rental Control fields used to "Rent" inventory items through the POS system. This is an alternative to our full Rental Module and is built-in to the POS Module.

Features: Inventory System Lookup Samples

Control of Lookup Sequence, Starting Point and Item Status is available on most lookups.



Most Lookups include easy access to other related information such as "Vendor's Price Book", inventory detail, "Other Locations" & "Expected Purchase Orders".

Item#/Size	Description	Status	MainVend	Price	Avail	OnHand	OnOrd	Bin#1	Bin#2	Stk	UOM	PGip
001056	0.00 1/4" FID	A	BRP	1.45	5	5	0	2A1		Y		
001060	0.00 FOLD LADDER	A	BRP	0.00	0	0	0	0A		N		
001061	0.00 3 ROD HOLDER	A	BRP	0.00	0	0	0	0A		N		
001062	0.00 VINYL BOOT	A	BRP	3.20	0	0	0	0A		N		
001063	0.00 3" GROMMET	A	BRP	0.75	0	0	0	0A		N		
001066	0.00 BATTERY HOLDER	A	BRP	12.30	0	0	0	0A		N		
001067	0.00 3/8" BOW EYE	A	BRP	0.00	0	0	0	0A		N		
001068	0.00 1/2" BOW EYE	A	BRP	0.00	0	0	0	0A		N	EACH	
001069	0.00 4.5" CLEAT	A	BRP	13.95	0	0	0	0A		N	EACH	
001073	0.00 BLACK GROMMETT	A	BRP	0.75	0	0	0	0A		N		
001074	0.00 STERN LIGHT	A	BRP	0.00	0	0	0	0A		N	EACH	

NEW Type 1st character(s) of field to find Item# or Desc (Press "Sh+Tab" to alternate Sequence). Arrow Up/Dw to reset -->

Details of Hi-Lighted Item

001056 0.00 Status: A Price: 1.45

Desc: 1/4" FID

UPC: PGip: MainVend: BRP BOMBARDIER Vendor: VendorItem#: 001056

Inventory Item Lookup (Large)

Item#	Size	Bin#	Description	Status	UOM	Avail	OnHand	OnOrder	Stk	Min	Max	Lead	YTDsold	LYsold
002658	A	SP10	DECK BRACKET	A	EAC	0	0	0	Y	1	0	0	0	0
002659	A		JAW/SIDE DOCK RING & PLATE	A	EAC	0	0	0	N	15	15	0	0	0
002675	A		DOCK RING	A	EAC	0	0	0	N	1	12	0	0	0
002676	A	SR6	SPARK PLUG L77UC4	A	EAC	0	0	0	N	4	1	0	0	0
002702	A	SR6	SPARK PLUG L92C	A	EAC	0	0	0	N	1	12	0	0	0
002744	A	4D3	ENGINE TUNER	A	EAC	0	0	0	N	1	1	0	0	0
002750	A	SR15	ENG. TUNER INJECT.	A	EAC	0	0	0	N	1	1	0	0	0
002755	A	BE	FOGGING OIL	A	EAC	0	0	0	N	1	1	0	0	0
002762	A	SPK	OIL FILTER	A	EAC	0	0	0	N	0	0	0	0	0
002800	A		OIL FILTER	A	EAC	0	0	0	N	0	0	0	0	0
002803	A	5A	OIL FILTER	A	EAC	0	0	0	N	0	0	0	0	0
002819	A		772005 1 LITRE DEXTRON	A	EAC	0	0	0	N	0	0	0	0	0
002820	A		772003 5" SPOOL ROLLER	A	EAC	0	0	0	N	0	0	0	0	0
002821	A			A	EAC	0	0	0	N	0	0	0	0	0
002828	A			A	EAC	0	0	0	N	0	0	0	0	0
002838	A			A	EAC	0	0	0	N	0	0	0	0	0
002856	A			A	EAC	0	0	0	N	0	0	0	0	0
002873	A			A	EAC	0	0	0	N	0	0	0	0	0

Inventory Lookup by Main Vendor

Vendor#	L/Up	SubGip	Item#	Size	Description	QtyOnHand
BRP			001404	0.00	SINGLE 18" BUMPER LOOPS	0
BRP			001410	0.00	TANK INST. KIT	1
BRP			001415	0.00	PRO 6 FUEL TANK WITH GAUGE	0
BRP			001421	0.00	FUEL CONNECTOR	0
BRP			001430	0.00	3/8"X10 POLY	0
BRP			001431	0.00	771607	0
BRP			001432	0.00	3/8"X15 NYLON	0
BRP			001433	0.00	3/8"X20 NYLON	0
BRP			001446	0.00	1/2 GOLD BRAID NY	0
BRP			001452	0.00	3FT RED BAT CABLE	0
BRP			001453	0.00	3FT BATTERY CABLE	0

Part Locator Lookup

Item#/Size	PGip	Description	Status	Main/Vendor#	Price	OnHand	Bin#	Bin#2	LGrp/SubGip
002364	0.00	12" 3 WAY DK BUMPE	A	BRP	0.00	0A			
002371	0.00	SET 8 MOORING WHIP	A	BRP	0.00	0A			
003	0.00	TA FISHING NET 1205	A	TFT	18.95	0SR8			
003040	0.00	RULE A MATIC	A	BRP	0.00	0A			
003051	0.00	360SPH 12V LIVE/WEL	A	BRP	0.00	0A			
003061	0.00	FIBGLS RESTORE WAX	A	BRP	0.00	0A			
003080	0.00	FRT/READ FL COMP	A	BRP	99.95	0A			
003180	0.00	1.50Z HORN KIT OBSOLETE	A	BRP	12.40	0A			
003181	0.00	3.0Z HORN KIT OBSOLETE	A	BRP	13.95	0A			
003182	0.00	4.5Z HORN KIT OBSOLETE	A	BRP	17.25	0A			
003200	0.00	OMC TOOL KIT	A	BRP	20.60	0A			
003204	0.00	55 CH VHF RADIO	A	BRP	150.00	0A			
003206	0.00	80 CH VHF RADIO	A	BRP	384.95	0A			
003207	0.00	PR 1" HOLDING CLIP	A	BRP	3.30	0A			
003208	0.00	PUMP	A	BRP	0.00	0A			
003209	0.00	6" DECK PLATE	A	BRP	0.00	0A			
003210	0.00	6.5 FT PR OARS	A	BRP	50.50	0A			
003211	0.00	7FT PR OARS	A	BRP	51.25	0A			
003212	0.00	6 PR OARS	A	BRP	49.30	0A			
003213	0.00	502238	A	BRP	0.00	0A			

Price Book Lookup

Part#	Description	Superseding Part	List Price	Vendor#
114930	SCREW#ANODE	VINTGE	4.57 BRP	
114931	FILL & DRAIN PLUG		4.57 BRP	
114932	WASHER		0.00 BRP	
114933	L/UP 4.57		4.57 BRP	
114934	SCREW		3.79 BRP	
114935	DRIVE PIN		3.56 BRP	
114936	O-RING		12.38 BRP	
114937	COVER-WTR PUMP		0.00 BRP	
114938			8.54 BRP	
114939			81.29 BRP	
115000				

Item Lookup by Partial Description

Item#	Size	Description
H40-2	0.00	#10 CUP WASHERS
006771	0.00	#10 FINISH WASHER
006768	0.00	#10 FLAT WASHER
006782	0.00	#10 LOCKWASHER
006766	0.00	#6 FLAT WASHER
H40-1	0.00	#8 CUP WASHERS
006767	0.00	#8 FLAT WASHER
006781	0.00	#8 LOCKWASHER
072-20970	0.00	*DRAIN/FILL WASHER
006772	0.00	.25 FINISH WASHER
006769	0.00	.25 FLAT WASHER

Search For: WASHER

Processing: Search is Complete

Other Inventory Lookup formats are available in the system (based on the particular process requirements).

All Lookups use the up/down arrows to "scroll" a line, the page up/down keys to "move" the lookup a full page of records, the F5 key to call the "Reposition Window" (Shown above) and the F9 key to display the Inventory "Details" window. Many lookups include "instant" repositioning as an Item# is entered.